

Samurai 1 Piece Full Top Installation Instructions

PLEASE READ CAREFULLY BEFORE STARTING INSTALLATION

To safely lift and install this hardtop, you will need the assistance of at least one other person.

Follow the instructions and perform the steps in the sequence given. Short cuts to the directions may result in an unsatisfactory installation.

WARNING

The top on this vehicle is designed only for additional protection against the elements.

Do not rely on the top to contain occupants within the vehicle or to protect against intrusion of foreign objects, nor injury during an accident.

Make sure all brackets and screws are tight. Periodically check for tightness and retighten when necessary.

WEAR SEAT BELTS AT ALL TIMES

Parts included in the installation kit.

- 2 ea. Adapters
- 4 ea. #8 x 3/4" Pan Phil Tek Zinc
- 2 ea. Catches (closed)
- 2 ea. 5/16"-18 x 1" BH Soc Screw
- 2 ea. 1" Flat Washers
- 2 ea. M6 x 35 Button Head Cap Screws
- 2 ea. M6 x 25 Black Washer
- 1 ea. M4 Hex Key
- 1 ea. 3/16 Hex Key
- 1 ea. Tube Silicon

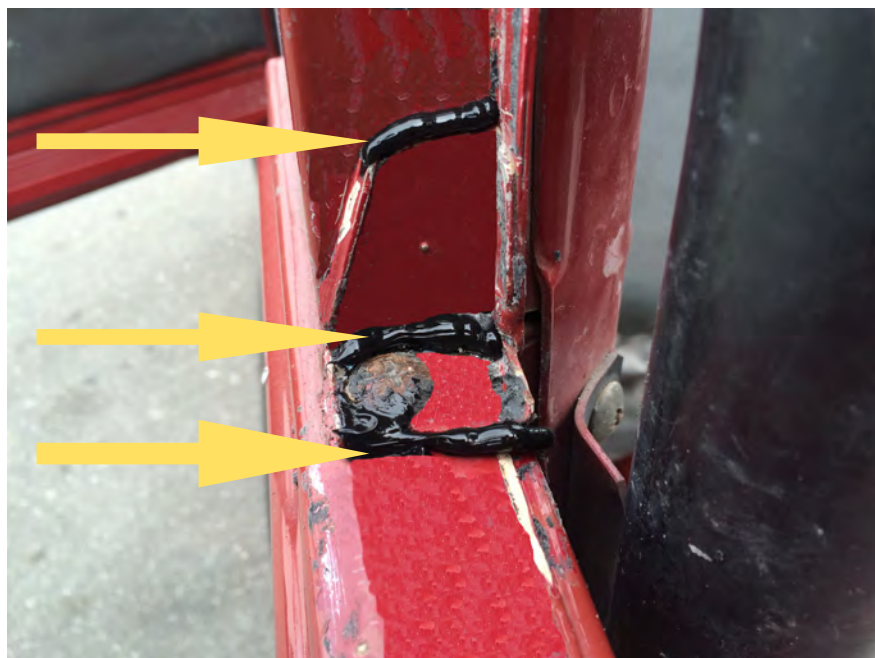
1. Remove soft top. Remove bow screws & assembly.



2. Remove soft top retainer strips.



3. Install catch in factory holes in windshield frame, inside holes.



4. Using the supplied silicon lay 3 beads in the corner as shown, on each side.



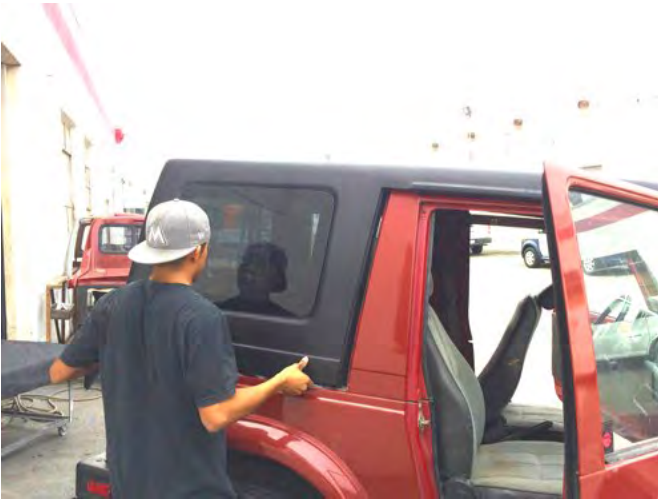
4. Using the supplied silicon seal the corners as shown, on each side.



5. Install the socket cap screw in the adapter. Then place the unit in the factory hole in the corner.



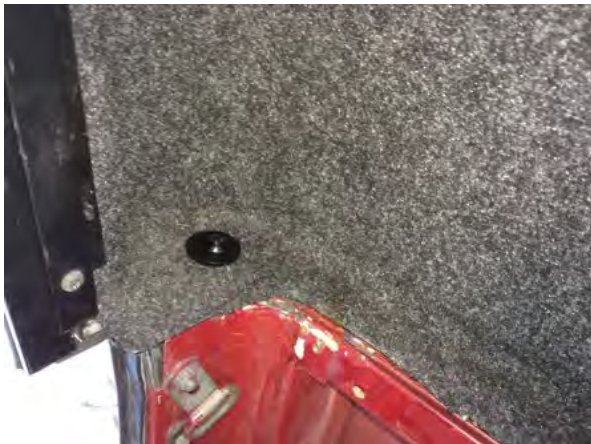
6. Using a power screw driver. Screw in the 2 screws as shown. Repeat on other side. Now remove the socket cap screw.



7. Install the hardtop.



8. Engage the cam locks to medium tension.



9. Install the larger socket cap screw in the rear hole along with the zinc washer. Install the thinner socket cap screw in the front hole along with the black washer. Then tighten them with the supplied keys.



9. Your done. Enjoy!!!

ATTN: STATE OF CALIFORNIA CONSUMERS



WARNING: CANCER AND REPRODUCTIVE HARM
WWW.P65WARNINGS.CA.GOV