

Samurai 2 Piece Full Top Installation Instructions

PLEASE READ CAREFULLY BEFORE STARTING INSTALLATION

To safely lift and install this hardtop, you will need the assistance of at least one other person.

Follow the instructions and perform the steps in the sequence given. Short cuts to the directions may result in an unsatisfactory installation.

WARNING

The top on this vehicle is designed only for additional protection against the elements.

Do not rely on the top to contain occupants within the vehicle or to protect against intrusion of foreign objects, nor injury during an accident.

Make sure all brackets and screws are tight. Periodically check for tightness and retighten when necessary.

WEAR SEAT BELTS AT ALL TIMES

Parts included in the installation kit.

- 2 ea. Foam Stripes
- 6 ea. 3/4" Phillips Pan Head Screw
- 2 ea. Self Locking nuts
- 4 ea. Catches (closed)
- 2 ea. Catches (notches)
- 2 ea. M6 x 30 Socket Head Capscrew
- 2 ea. Washers
- 1 ea. Front Seal 46" (Short)
- 1 ea. Rear Seal 100" (Long)
- 1 ea. Tube Silicon

1.
Remove
soft top.
Remove
bow
screws &
assembly.



2.
Remove
soft top
retainer
strips.



3.
Install
catch in
factory
holes in
windshield
frame.



4.
Install
notched
catch
(notch
facing
down) on
the door
jam rear
factory
hole.



5.
Mark the
factory
trim above
the door
jam on
both sides
& then
remove
the trim.



6.
Cut the
trim as
marked &
reinstall
the two
pieces
that run
vertically.



7.
It should
look like
this on
both
sides.



8.
Starting
at the cut
end of
the
vertical
trim,
install the
new short
seal
piece.



9.
Continue installing the short seal and cut to fit at the other side.



11.
Apply sealant under where the roll bar normally sits.



13.
Lay a bead of silicon across the bar and extent it about 2" past the bar on both sides.



15.
Seal in the valley, but don't block the valley. This must allow the water to drain.



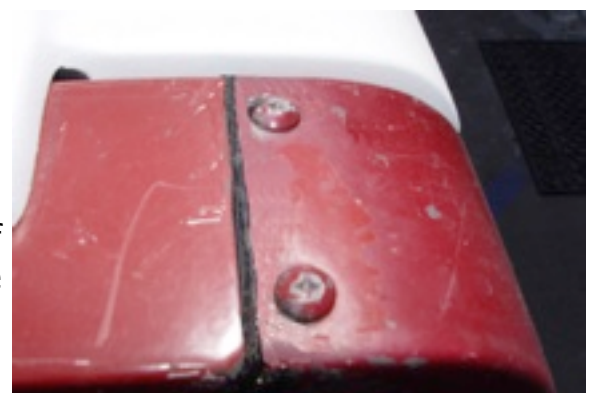
10.
Remove the screw holding the roll bar support & move it to the side about 3".



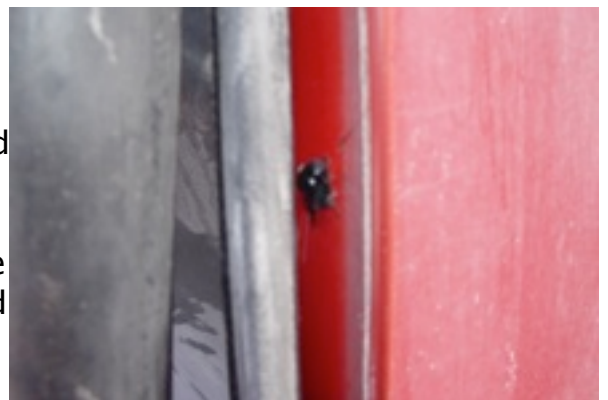
12.
Reattach roll bar support.



14.
Totally seal this crack starting from the bottom of the flange all the way to the other end.



16.
Seal all screw holes and any cracks along the sides and top.



17.
Seal the corner so that water does not enter the cab, but flows down the channel.



18.
Seal as shown.
Take your time and get all the cracks & holes.



19.
Seal in the front inside corners.



20.
Remove roll bar padding.



21.
Install foam tape to corners.
Then cut 2" of the channel, off one end of the long seal. Leaving 2" of bubble.



22.
Start at one end & install the long seal. At the other end, cut the channel, leaving 2" of bubble.



23.
It should look like this. Now silicon over the foam tape.



24.
Pull back the rear side panel, to allow for installation of clip.



25.
Remove
the
second
retainer
clip from
the panel.



26.
Using a
phillips
screwdriver,
punch a
hole where
the retainer
was.



27.
Install the
clip, using
the nut &
bolt. Snap
the panel
back in
place.



28.
Install the
top.



29.
Install the
M6 Allen
with washer.
While
pushing
down on the
top.
Tighten
Allen
capscrew.



30.
Adjust rear
camlock to
medium
tension
and lock.



31.
Install
front
section
and adjust
all
camlocks
to medium
tension &
lock.



32.
Don't
forget the
keys!

ENJOY



ATTN: STATE OF CALIFORNIA CONSUMERS



WARNING: CANCER AND REPRODUCTIVE HARM
WWW.P65WARNINGS.CA.GOV