

# Bronco 4 Door Installation Instructions

PLEASE READ CAREFULLY BEFORE STARTING INSTALLATION

To safely lift and install this hardtop, you will need the assistance of at least one other person.

Follow the instructions and perform the steps in the sequence given. Short cuts to the directions may result in an unsatisfactory installation.

## WARNING!

The top on this vehicle is designed only for additional protection against the elements.

Do not rely on the top to contain occupants within the vehicle or to protect against intrusion of foreign objects, nor injury during an accident.

Make sure all brackets and screws are tight. Periodically check for tightness and retighten when necessary.

**WEAR SEAT BELTS AT ALL TIMES**

### Parts included in the installation kit.

4 each	Bolt M8 x 30
2 each	Bolt M8 x 40
6 each	Washer 3/8"
1 each	T 30 Torx Key
2 each	Spacers 3/16" thick
6 each	#10 x 1" Screws



1. Release the 2 front clips. Push the soft top up and over towards the rear of the vehicle.



2. Remove the side windows. Release the velcro at the top of the window. Pull the top rear out of the slot. Unbuckle the three clips at the top and slide the window out towards the front.



3. Remove the back window. Release the velcro along the top of the window and flip it up. Fold the bottom corners back to disengage the clips. Now remove the top corners from the slot. Unbuckle the 4 clips at the top and slide the bottom of the window out to the left or right.



4. Above the drivers window. Press down on the latch to release the soft top.



5. Lift the soft top up and to the rear of the vehicle. Press down on the soft top on both sides to latch it.



6. Remove the access panel above the rear wheel wells in the cargo area.



7. Place a rag in between to catch the bolts if you drop them. Using a 13mm socket wrench remove the three bolts from both sides.



8. Push up on the latches on each side of the rear corners the soft top. This will release the soft top for removal.



9. Remove the front clamps from the soft top. Using the supplied Torx key remove the three screws from the front clamps.



### Note:

Make sure you put the clamps on the side that they came off of. Right side to right side. Left side to left side.

10. Using the screws provided install the front clamps. Push the clamps forward and tighten the screws by hand.



11. Using at least 2 people install the rear section on the vehicle. Push it forward and install the flange bolts. Run the bolts in, but not tight.





12. Install the mid body bolts.  
Run the bolts in, but not tight.  
Use the M8x40 bolts



13. Install the front section. Make  
sure it's centered left to right.



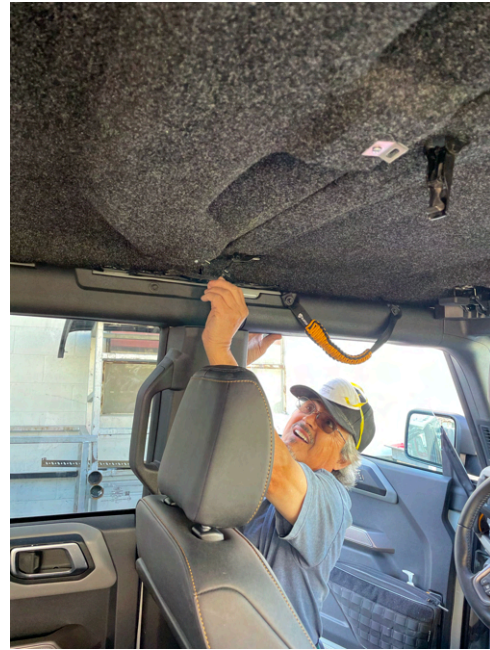
14. Engage the front clamps.



15. Install the spacers between the front  
and rear sections. This will keep the  
proper alignment between the tops.



16. Engage the rear side clamp to medium tension. To adjust the tension. Open the clamp and turn the hook in or out.



17. Now do the same with the center clamp. Engage the center clamp to medium tension. To adjust the tension. Open the clamp and turn the hook in or out.



18. Now start with the rear flange bolts. Pull the top out and match the outside body line. Then tighten the rear bolt.



19. Now do the front flange bolt. Push the top in and match the outside body line. Then tighten the rear bolt.





20. Undo the front section clamps front and rear. Then lift the front section off. Collect the spacers. Then tighten the mid body bolts. Then reinstall the front section and secure the clamps front and rear.



21. Pull the rear door down. Make sure it's not binding. Then close the tail gate slowly to make sure there is no interference.

Happy Trails !!!!