

Mahindra Roxor 4 Passenger Installation Instructions

PLEASE READ CAREFULLY BEFORE STARTING INSTALLATION

To safely lift and install this hardtop, you will need the assistance of at least three other person.

Follow the instructions and perform the steps in the sequence given. Short cuts to the directions may result in an unsatisfactory installation.

WARNING

The top on this vehicle is designed only for additional protection against the elements.

Do not rely on the top to contain occupants within the vehicle or to protect against intrusion of foreign objects, nor injury during an accident.

Make sure all brackets and screws are tight. Periodically check for tightness and retighten when necessary.

WEAR SEAT BELTS AT ALL TIMES

Parts included in the installation kit

8 Each	M8-1.25 x 20mm Flange Bolts
1 Set	4 Door Hinges
4 Each	1/4-20 x 1.25" Button Cap Screws
4 Each	1/4-20 Weld Nuts
4 Each	Cut Washers
1 Each	M4 Hex Key
2 Each	Rear Clamps
2 Each	Rivet and back-up washers
1 Each	8' Windshield seal
2 Each	Keys

Tools Required

Socket Wrench with 13mm & 9/16" sockets

Metal Grinder

Phillips Screw Driver

Water Pipe or pipe wrench

Pop Rivet Gun

5/16 & 3/16" Drill Bits





1. On the roll bar corner bracket. Remove both bolts and save them. Do both sides for all left and right instructions.



2. Using a grinder. Grind the metal end of the roll bar until it's flush with the body. See the 2 pictures on the right.



3. Using a 1" water pipe or a pipe wrench, bend the tabs on the roll bar inward.



4. Unscrew the 4 hinge covers and pop them off.



5. Install the hinges using the supplied bolts and tighten.



6. Remove windshield and set aside.



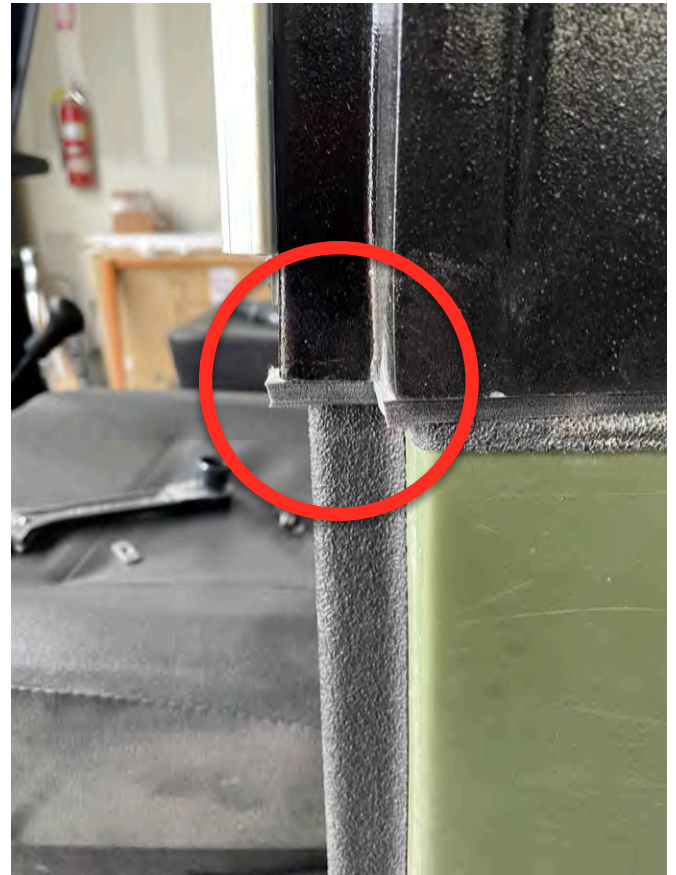
7. Lay a piece of 1" masking tape about 33" on the flange rail. Starting from the front to the back.



8. Install the top. Make sure the top is flush with the side of the vehicle.



- 8A
Make sure that the top is flush at the back of the door. If it looks like this. Proceed to Step 9.



- 8B
If it looks like this. Where the top is not even with the back of the door. The roll bar will have to be removed and cut. Proceed to step A.



9. Go to the inside of the top and mark the 2 holes on each side for the flange bolts.



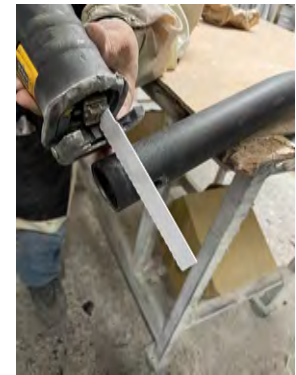
10. Remove top and drill the 4 holes with a 5/16" drill bit.

Step A Roll Bar Adjustment

- A1. Remove roll bar from vehicle. By removing the bolts from the rear, middle and front attach points.



- A2. Place the roll bar on a work bench. Using a saw or a pipe cutter. Remove 1/2" from the roll bar at the front end.



- A3. Remove any metal shavings and clean the ends. Reinstall roll bars.



- A4. Tighten the back and the middle bolts. Pull the windshield bar back and tighten the bolts.



- A5. Reinstall the top. If it looks like Step 8A. Then proceed to step 9. If it's still not flush, cut another 1/4" off the front of the roll bar and retry.



11. Lift the top up and install the side pillar covers.



12. Bolt them down.



12. Now lets go to the windshield and clean the perimeter of the inside edge of the windshield. Now install the new seal.



13. Install the nut plates and tighten the 4 bolts.



14. Reinstall the lower windshield bolts. The 3 top bolt holes will have to be drilled through the hardtop. Drill the holes and reinstall the bolts.



15. Locate the mark where the A pillar and hardtop meet.



15. Drill a 3/16" hole. Make sure you hold the 2 pieces together when you drill the hole.



16. Using the supplied rivet. Stick the rivet in the hole and put the washer on the inside where the rivet comes out of the hole.



17. Now insert the rivet gun all the way in and make sure you hold the washer and squeeze the tool to pop the rivet.



17. Hang the door on the hinges.



18. Adjust the door. It might be necessary to loosen the hinge bolts on the vehicle to get the door adjusted. Don't move the hinge that's on the door.



19. When you're done it should look like this. Even space all around the door.



19. Install the clamp on the rear flange. Get it almost tight and then pull the rear of the hardtop out until it is flush. Then tighten all the way. See adjacent picture.





20. The first time you close the back window and tailgate. Do it slowly to make sure it's going to close smoothly and not get hung up on anything.

Enjoy your new top!