

1989–1997 Geo Tracker – 1998 Chevy Tracker – Suzuki Sidekick  
**Installation Instructions**

**PLEASE READ CAREFULLY BEFORE STARTING INSTALLATION**

To safely lift and install this hardtop, you will need the assistance of at least one other person.

Follow the instructions and perform the steps in the sequence given. Short cuts to the directions may result in an unsatisfactory installation.

## **WARNING**

The top on this vehicle is designed only for additional protection against the elements.

Do not rely on the top to contain occupants within the vehicle or to protect against intrusion of foreign objects, nor injury during an accident.

Make sure all brackets and screws are tight. Periodically check for tightness and retighten when necessary.

**WEAR SEAT BELTS AT ALL TIMES**

### Parts included in the installation kit.

2ea.	Allen Head M6 x 65 Socket Screws	Rear Section Part in bag
2ea.	1/4" x 1" Fender Washers	Rear Section Part in bag
2ea.	M8 x 40 Hex Bolt	Rear Section Part in bag
2ea.	M8 Washers	Rear Section Part in bag
1 ea.	3/16" Hex Key	Rear Section Part in bag
2ea.	Rear Clamps	Attached to the Front Section
2ea.	5/16" Washers	Attached to the Front Section
2ea.	Wing Nuts	Attached to the Front Section

## Front Section Installation



1. Remove front bracket.



2. Remove front bracket.



3. Insure that the factory clamps are in good condition. Install front section, so that the front factory clamps are centered in the front section's catches. Push down on the front section and engage the clamps into the catches. Only use medium pressure. If needed adjust the hardtop catches by clamping them with a vise grips and gently pulling down on them to open them up a little.



4. Attach the rear clamp using the 5/8" washer and wing nut provided. Tighten both sides.

## Rear Section Installation

### Tools Required

Screwdriver, Metric socket set, Drill with 3/4" bit and Utility Knife



1. Remove soft top. Using a phillips screwdriver, remove all plastic from around perimeter of rear section. Do not remove the tailgate molding.



2. Remove soft top rear brace hoop. On 1989–1994 models, remove the perimeter seal (approx. 120" long), from around the tub.



3. Remove soft top front brace hoop.



4. Remove rubber bumper by unscrewing the two screws.



5. Remove the screw in the lower tower cover and lift the tower cover up.

6. This exposes the bolt.

(1995 and later)  
Remove bolt and discard retainer.

(All models)  
Remove bolt. Do not reinstall bolt.



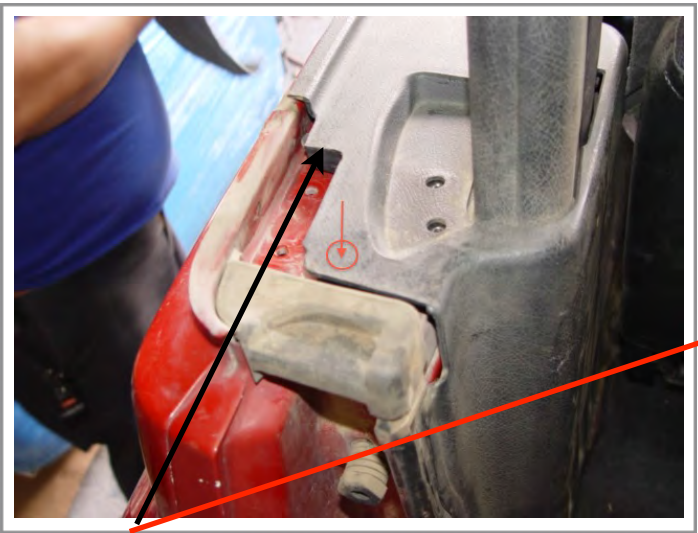




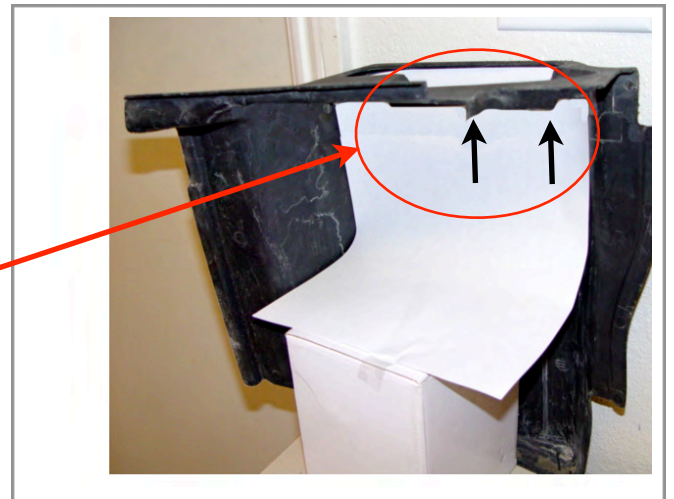
7. Put the tower cover back down.



8. Drill a 3/4" hole in the plastic or cut a section out, to expose the bolt hole from step 6.



9. Lift the tower cover up and remove the downward tab of the tower cover, using a sharp blade. See step 10



10. Tower cover exposed for a better view.



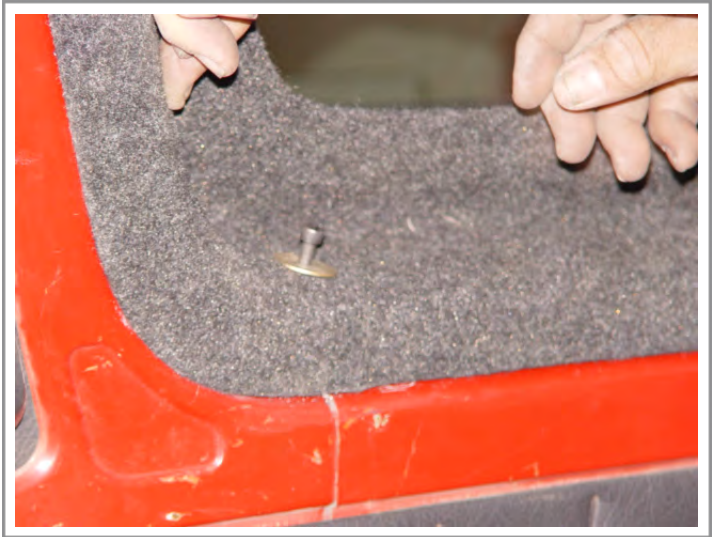
11. Using 2 people, open the rear hatch, place the top on the vehicle, as shown. This engages the front flange.



12. Now lower the back into place. Ensure the tower cover is on top of the hardtop flange. See step 14.



13. Make sure the tower cover is on top of the inside flange. Thread the M8 bolt and washer into the rear hole. Do not tighten.



14. Thread the M6 screw and a 1" washer, into the nutplate. Tighten the front screws and then tighten the rear bolts.



- 14A. If you can't get the M6 screw started. Pull the top back and get the screw started about 1". Then pull the bolt outward a little. This may have to be repeated to align the top with the nutplate.



15. Close the rear window slowly to check the fit. Then close the swing gate slowly to check the fit.

**Enjoy!!!**

**ATTN: STATE OF CALIFORNIA CONSUMERS**



**WARNING: CANCER AND REPRODUCTIVE HARM**  
**[WWW.P65WARNINGS.CA.GOV](http://WWW.P65WARNINGS.CA.GOV)**